

KISTLER



KISTLER
ELECTRIC INTELLIGENT ACTUATOR
ELECTRIC VALVES

9001 : 2000



CK. Intelligent Supply Co.,Ltd.

312/4 ซ.สุขาภิบาล6 ต.บางพลีใหญ่ อ.บางพลี จ.สมุทรปราการ

Tel: 02-096 0616 Email: info@ck-supply.com

www.ck-supply.com

KISTLER Electric Actuator

Patented products,
Counterfeiting not allowed

© 2016 apcentertrade copyright

♻️ Ecology protection

KISTLER electric actuator

Patented products,
counterfeiting not allowed

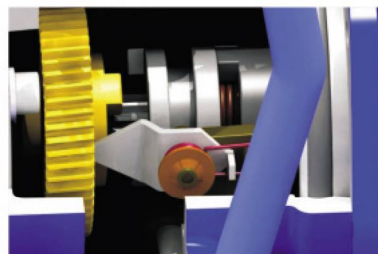
Summary

"KISTLER" series electric actuator is used for controlling 0°-270° rotation of the valves and other similar products, such as butterfly valve, ball valve, damper, flapper valve, cock valve, etc. It widely applies to petroleum, chemical, water treatment, shipping, paper marking, power plant, heating, light industry and other industries. Driven by 380V/220V/110V AC power or 24V/110V DC power, inputs 4-20mA current signal or 0-10V DC voltage signal as control signal, moves the valve to the right position, and achieves automatic control.

Performance Feature

1. Shell--The shell is made of high-strength aluminium alloy, with anodic oxidation treatment and polyester powder coating. It is strong corrosion-resistant and enclosure IP67, NEMA 4 and 6, IP68 is optional.
2. Electric Machinery--Fully enclosed Squirrel-cage machinery, small, large torque, and small inertia force, F-class insulation rating, place hot protection switch internal to avoid damaging the electric machinery.
3. Manual Structure--The design of handle is safe, reliable, labor-saving, small. If without power, it can be operated by handle. If don't operate by handle, put the spanner in the spanner folder, convenient to use.
4. Indicator--Installs indicator in the center axis and adopts convex mirror design, no cumulate water, more convenient to observe.
5. Space heater--It is used for controlling temperature, avoiding internal moisture of electric actuator condensed because of the changing of temperature and weather, keep inner electric device dry.
6. Sealing--Well sealing performance and enclosure IP67, IP68 is optional.
7. Limit switch--Mechanical, electronic double limit. Mechanical limit screw is adjustable, safe and reliable; electronic limit switch is controlled by the cam. Set position accurately and conveniently by simple adjustment, and it is not affected by excessive handle.
8. Self-locking--Accurate worm and worm gear transfer large torque efficiently, high efficiency, low noise (max, 50 dB), long life, with self-locking function, prevent inversion, as stable and reliable transmission parts, no need to refuel.
9. Anti-off bolt--The bolt will attach to the shell and not be off when remove the shell.
10. Installation--The installation size of the bottom meets international standard ISO5211 / DIN3337, There are double squares between the bottom and the hole connect to the stem which are convenient to install square stem valve straightly or in 45° rotation angle.
11. Circuit--Controlling circuit meet the single-phase or three-phase power supply standard, circuit layout is reasonable and compact, terminals meet various of additional functional requirements effectively.

Standard Parts Structure

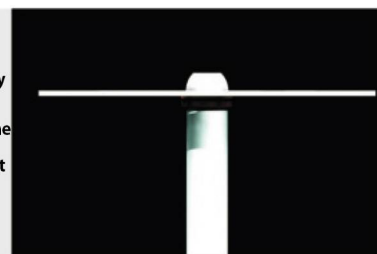


<<Manual operation (Clutching system)>>

- Manual/Auto convert to handle and handwheel used for emergency manual operation
- Powered, handle will automatically reset to auto operation

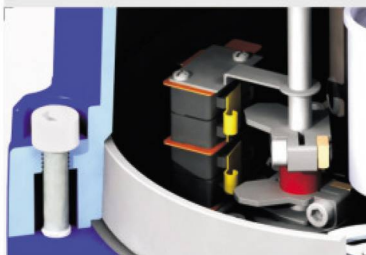
Indicator sustained by spring>>

- Direction of indicator has been set by factory
- If change direction of indicator, just grip the indicator plate to change it
- Spring under the indicator plate sustains the set position unchanged
- No need to loose screw and tight against at all.



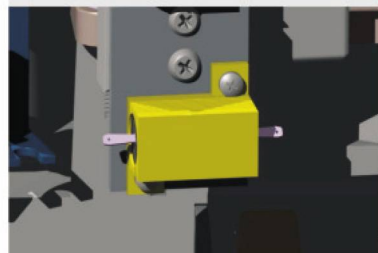
Cam and limit switch>>

- Tighten with two screws and simple setting
- Each cam can be set separately.
- Once set, each cam will be on the position forever.



<<Inclined plane

- For other actuators, it is hard to take off cover because of little tolerance when the interface between cover and body is vertical.
- For KL-EA actuators, it is easy to take off cover as small tolerance. the design of interface is 3 degree inclined plane.

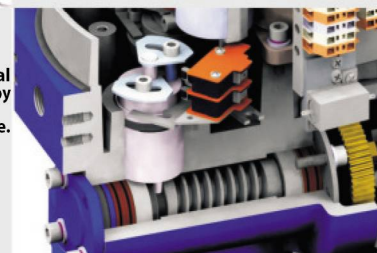


<<Space heater

- 7-10W, ceramic housing with thermostat to prevent overheat comparing with set temperature
- Without risk of electricity leakage

Torque switch>>

- Torque switch protect motor and internal electric components from overheat caused by overload of valve.
- If torque works, the actuator stop at once.



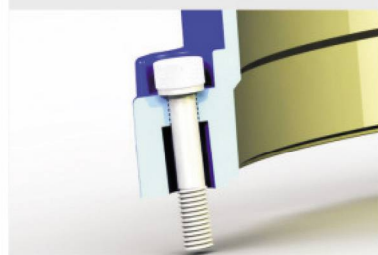
Terminal block >>

- Enough terminal for customer's convenience (Max 22 points)
- Proven reliability and tight wiring connection
- Terminal length: 8-9mm/(2.5mm')
- Terminal dimension: 10x22x32mm.



<<Removable drive sleeve

- Sleeve is removable as different requirement
- 4 under hungs for tightening or loosening between drive shaft and sleeve.
- Easy installation with valve.



<<Anti-off bolt

- Cover bolts are specially designed to prevent falling down during maintenance or installation
- All external bolts are stainless steel for rust Prevention

Two slots on window glass>>

- Two slots on the window covers and convex are convenient for draining and observing, and ensure the well sealing of the cover.



PERFORMANCE PARAMETER



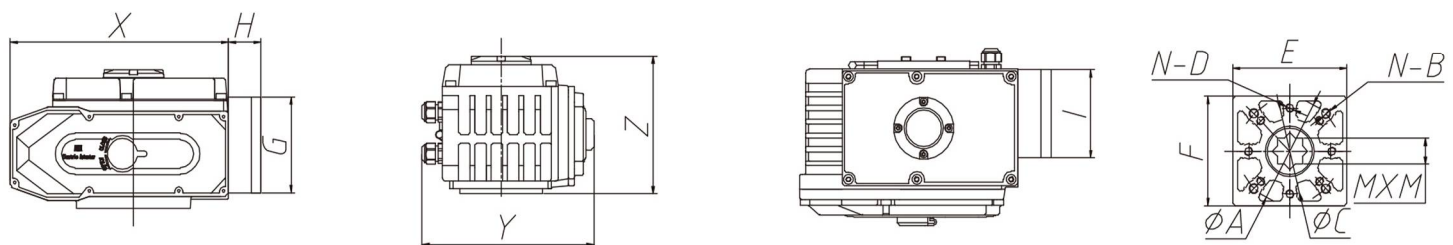
Model	Max output torque(N·M)	Operating time 90°(S)	Drive shaft(mm)				Power (W)	Rated current(A) 220VAC/1ph	Weight (kg)
			Square	Deep	Round	Deep			
KL-EA030	30	20	9×9 11×11	13.5 15.5	Φ12.6	26	8	0.15	2.1
KL-EA050	50	30	11×11 14×14	15.5 18	Φ12.6	26	10	0.25	3.6
KL-EA080	80	30	11×11 14×14	15.5 18	Φ15.78	26	10	0.25	3.6
KL-EA100	100	30	14×14 17×17	18 22.5	Φ15.78 Φ18.95	28	15	0.35	4.6

STANDARD TECHNICAL PARAMETER

Shell	Aluminium alloy Shell, Enclosure:IP67,IP68 is optional	
Power	Standard:220VAC/1ph Optional:110VAC/1ph, 380V/440V/3ph,50/60HZ, ±10% 24VDC/110VDC/220VDC	
Controlling power	110/220V AC 1Phase,50/60 Hz, ±10%	
Motor	Squirrel-cage Asynchronous Motor	
Limit switch	2×Open/ Close,SPDT,250V AC 10A	
Auxiliary limit switch	2×Open/ Close,SPDT,250V AC 10A	
Travel	90° ~270°±10°(Please specify in advance if over 90°)	0°~270°
Fail safe/ Operating temperature	Internal-placed thermal protection, On 120℃ ±5℃/Off 97℃ ± 5℃	
Indicator	Continuous situation indication	
Manul operation	Mechanical handle (Handwheel is optional)	
Self-locking device	Self-locking by worm and worm gear	
Mechanical Limit	2 x external adjustable stopper	
Space heater	30 W (110/220V AC) Anti-condensation	
Conduit entries	2 Pieces M18	
Ambient temperature	-20℃~+70℃	
Lubrication	Grease moly(EP tyte)	
Material	Steel, Aluminium alloy, Aluminium bronze, Polycarbonate	
Ambient humidity	Max 90% RH	Non-Condensing
Anti-vibration	X Y Z 10g,0.2~34 Hz,30 minutes	
External coating	Dry powder, Epoxy polyester	

GENERAL DRAWING

KL-EA030-100



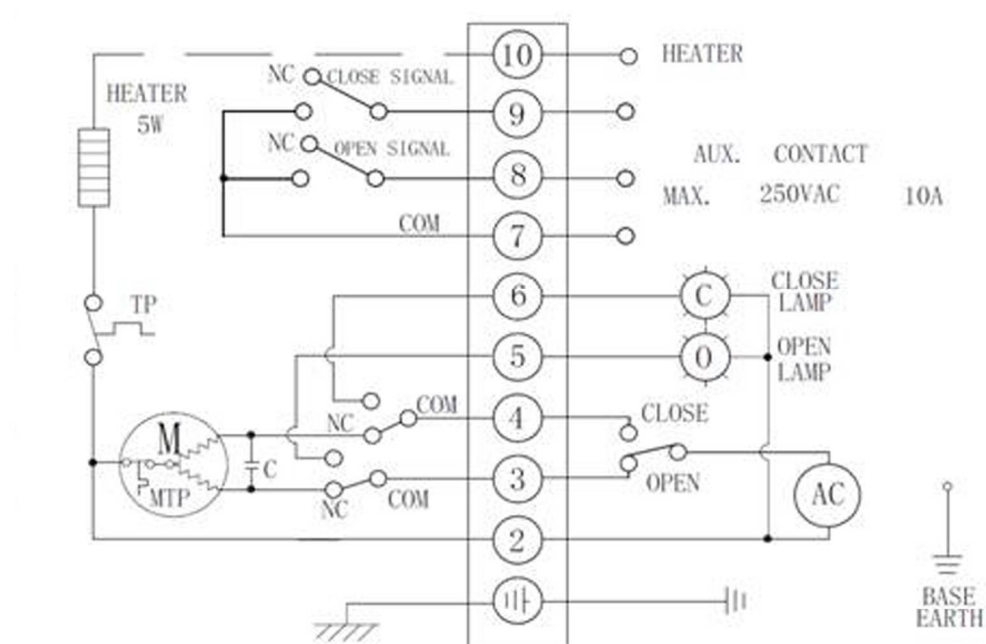
Unit: mm

Model	X	Y	Z	ΦA	N-B	ΦC	N-D	ΦA1	E	F	G	H	I	X1	X2	M×M
KL-EA030	123	123	113	Φ50	4-M6	Φ42	8-M5	—	50	50	—	—	—	—	—	11×11
KL-EA050	160	146	121	Φ70	4-M8	Φ50	4-M6	—	66	66	114	40	100	—	—	14×14
KL-EA080	160	146	121	Φ70	4-M8	Φ50	4-M6	—	66	66	114	40	100	—	—	14×14
KL-EA100	189	163	129	Φ70	4-M8	Φ50	4-M6	—	100	90	114	40	100	—	—	17×17

Circuitry

(note: Circuitry is only for reference, which is subject to the circuitry attached to product actually.)

1. KL-EA030-100 110/220VAC/50/60Hz .1 pH(onoff model)



KISTLER Electric Actuator Series

QUICK OPENING SERIES

OPTION SPECIFICATION

No.	Option scheme	Remark
1	Heater	Except KL-EA030
2	Water-proof actuator (IP68, 10M, 250HR)	KL-EA series
3	Potentiometer unit (1K-10K)	Except KL-EA030
4	Proportion control unit (control signal 4-20mA DC/1-5V/1-10V)	Except KL-EA030
5	Local control units (local control open/stop/close optional switch, local/remote switch)	Except KL-EA030
6	Travel 120°, 180°, 270°	KL-EA series
7	Direct current motor (24VDC)	Except KL-EA030
8	Electric current position sensor (output 4-20mA DC)	Except KL-EA030
9	Self-reset when power failure	KL-EA series
10	Quick opening (2.8S, 5S, 10S, 15S)	KL-EA series

